



Old Market Square
1908, P 117



Old Market Square,
Showing Country
People, 1910, P 116



Tsarist Policemen In
Mariampole, 1910,
P 109



Hotel Europa on Old
Market Square, 1910,
P 116



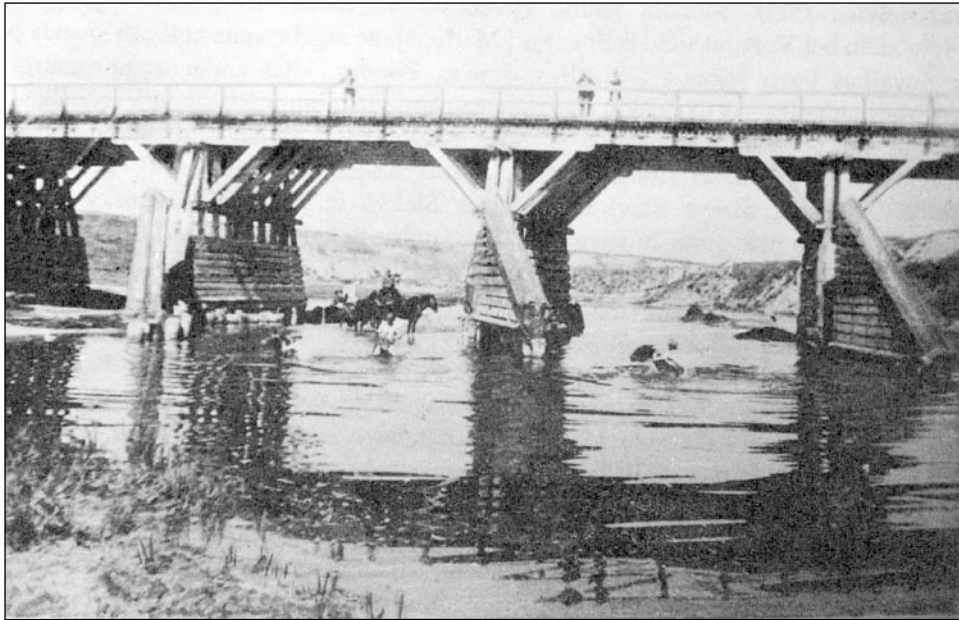
Fair, View of
Agricultural Exhibit,
1911,
P 113



Agricultural Exhibit,
Ploughers' Pavilion,
1911,
P. 114



Agricultural Exhibit,
1911,
P 114



Kumelionian Bridge
over Šešupė River,
1925, P 101



Old Market Square
before World War I,
Horse and Buggy,
1915, P 127 *



Old Market Square,
1915, P 127 *



Old Market Square,
1916, P 123

Showing Bank and
Narrow Gauge
Railway Line Going
through Street



City Park Entrance,
1917, P 130



City Hospital, 1920s,
P 80



Šešupė River, 1925,
P 139

Showing Peaks of the
Monastery in the
Background



Square in Front of
Bus Station, Showing
Market, 1923, P 145



Lithuanian Bank at
One of the Town's
Squares, 1923,
P 145



Citizens' Square,
Showing Market,
1925, P 159



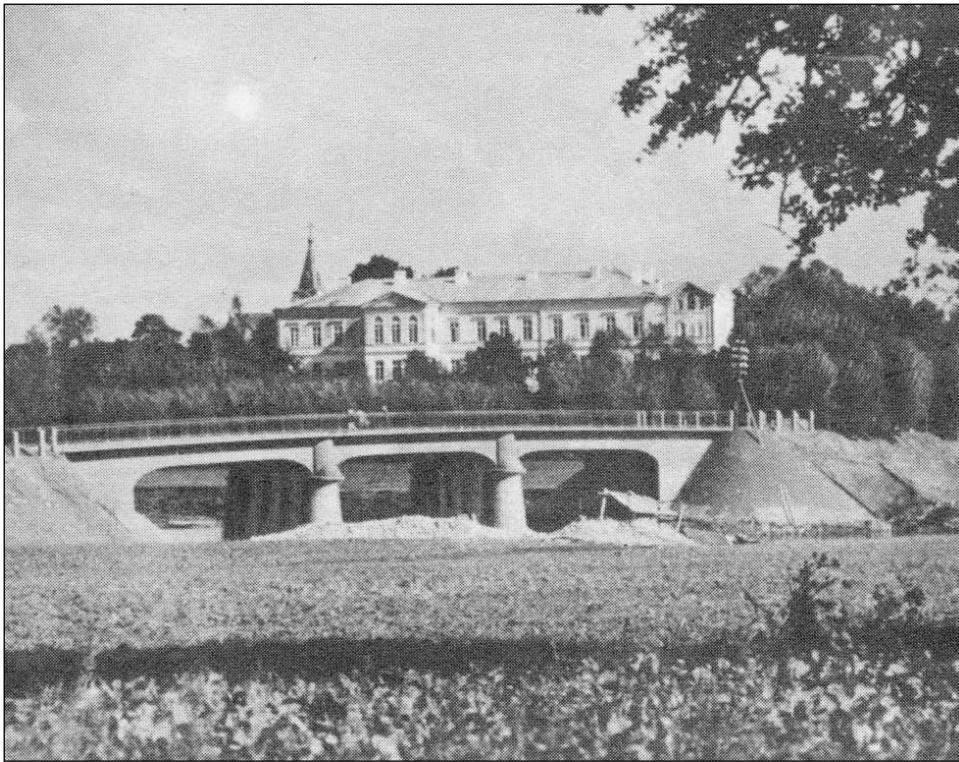
Technical or
Vocational High
School, 1925,
P 157



Šešupė River, 1925,
P 139
Showing Monastery
Peaks in the Rear



Train Station, 1926, P
154 *



Bridge over Šešupė
River, 1926, P 155



Building, 1928, P 170



Photography Studio,
1928, P 169



Market at Jonas
Basanivicius Square,
1928, P 165

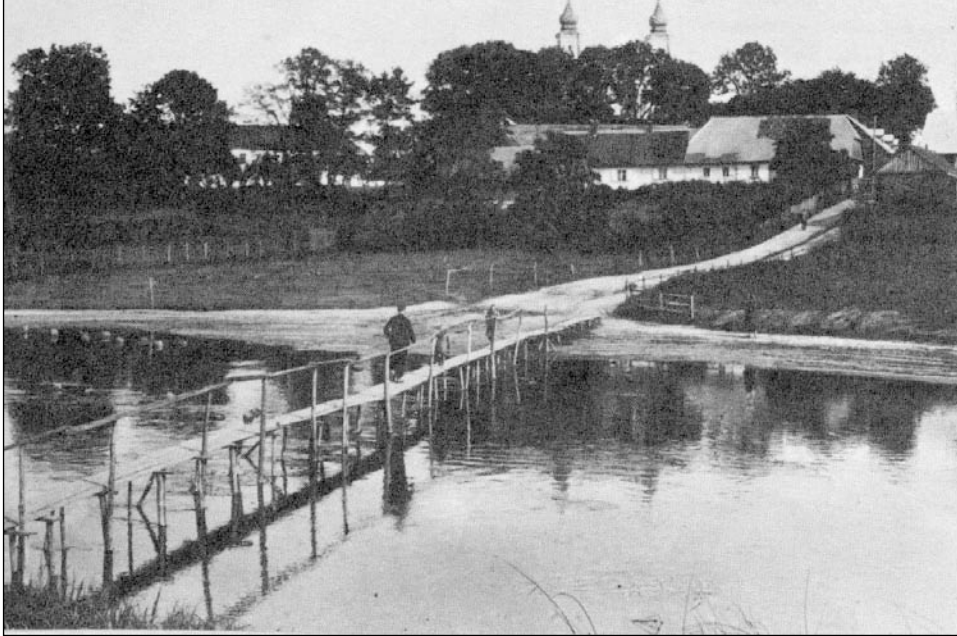
Showing Fair or
Market

J. Basanivičius was a
Famous Lithuanian
Poet.



Market, 1928, P 165

Showing a Military
Parade.



Foot Bridge oOver
Šešupė River, 1930,
P 137

Peaks of Monastery
Shown in Rear



Synagogue, 1930,
P 68



High School, 1930,
P 79



Portion of Synagogue
Interior, 1930, P 69



Jewish Prayer
House, 1930, P 97



Jewish Synagogue
Complex, Prayer
House (right front)
And Synagogue (left
rear), 1930,
P 97



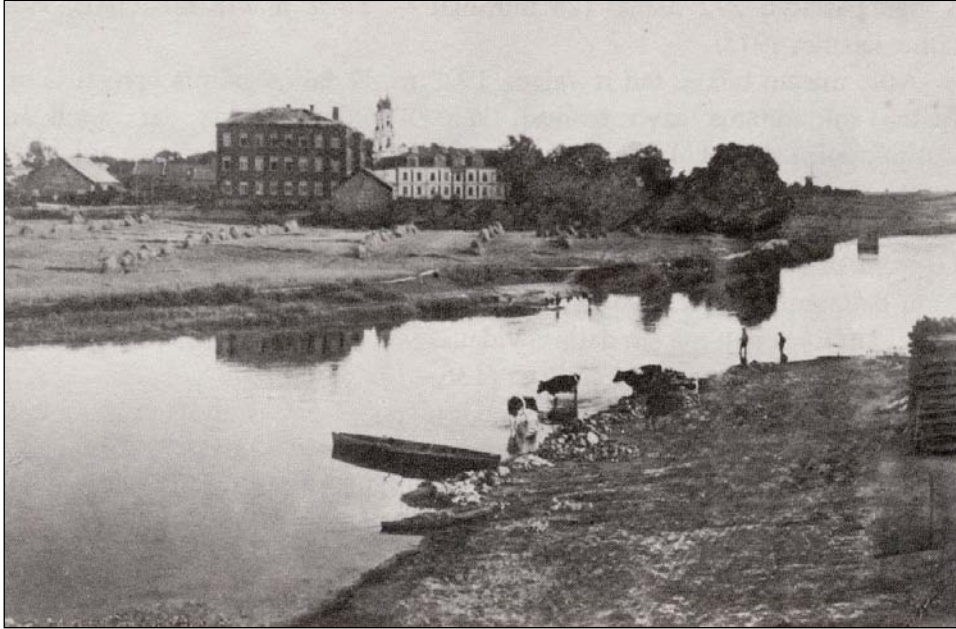
Market Day at Liberty Square, 1930, P 174

Country Women Typically Wear Scarves and Shoppers Carry Baskets.

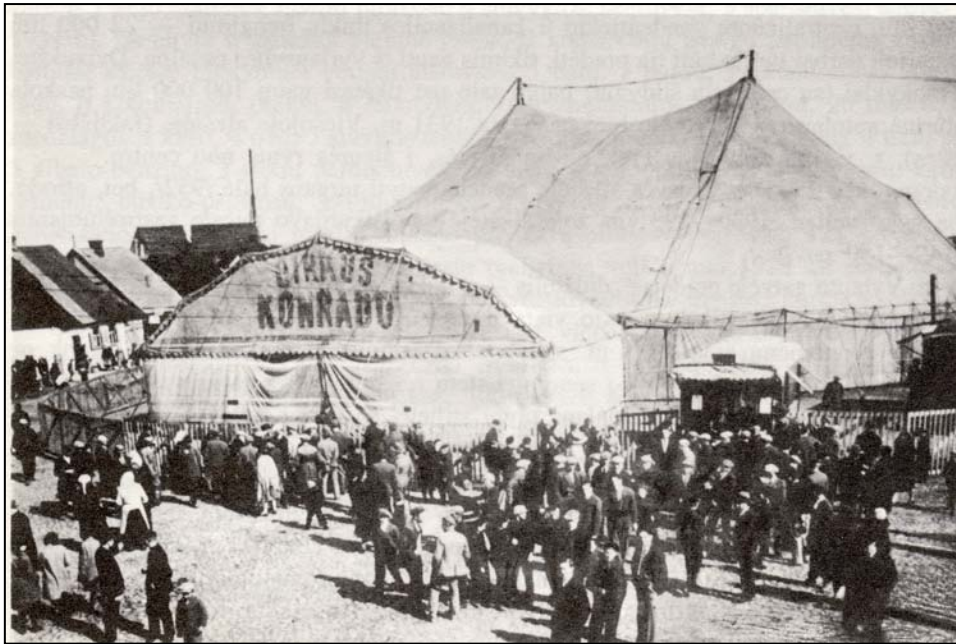


Library, High School, and Printshop along River, 1930, P 163

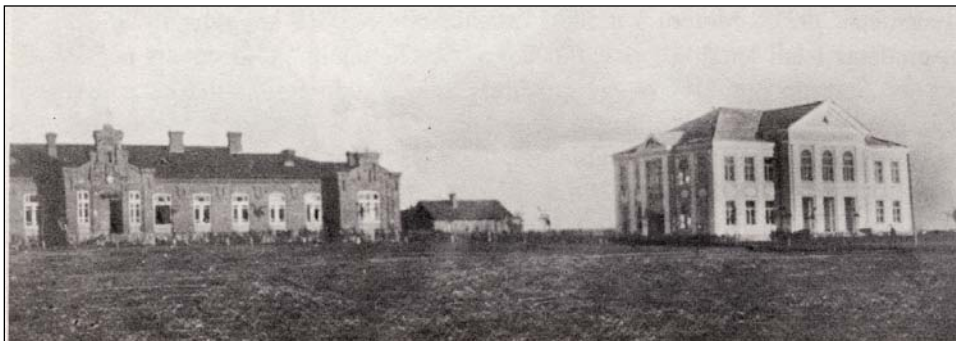
View is from a Church Tower.



Views of the High School Complex from across the River, 1930, P 163



Konrad Circus Pavilion at Liberty Square, 1931, P 174



Teacher Training School 1931, P 170



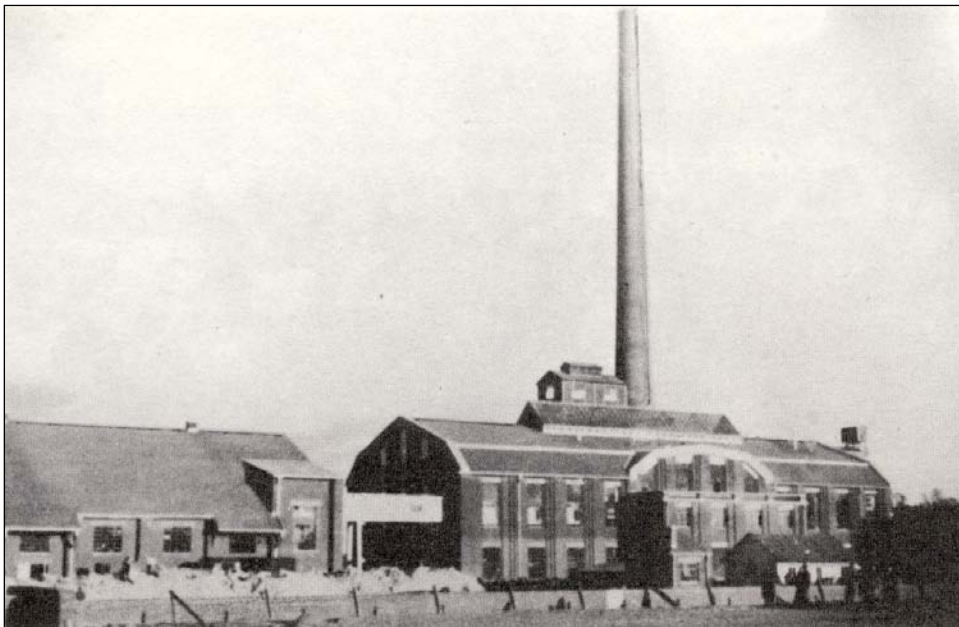
Justice of the Peace,
Legal Court, 1931, P
175



Cars and Buses at
Basanivičius Square,
1933, P 187



Street with Movie
Theater, 1933, P 187



Sugar Factory, 1934,
P 173

Sugar Beets were
grown and made into
Sugar.



Bookstore (left) and Bereskevičius Store (center), 1935-1936, P 203



Pharmacy (left), News Stand (right), Cobblestone Path on Liberty Street, 1936, P 203



Agricultural Shops
and Various
Businesses on
Basanivičius Square,
1936, P 201



Long Shop, Farm
Implement
Storehouse on
Basanivičius Square,
1936-37,
P 201